

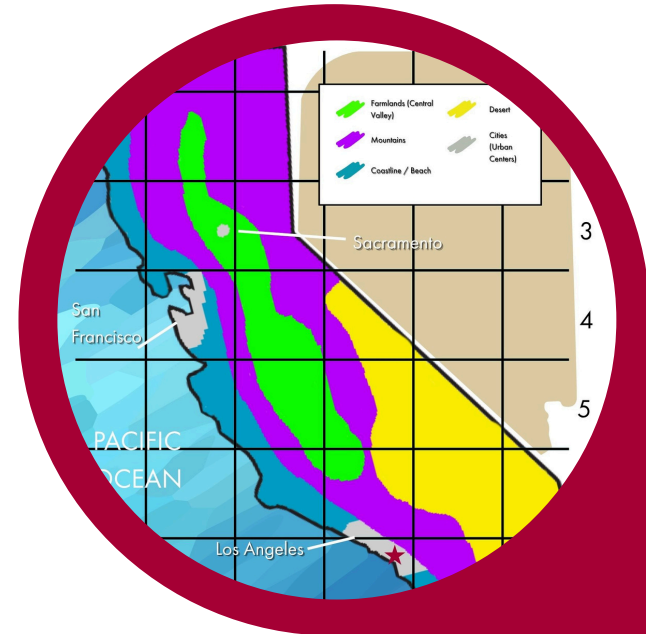
HILBERT MUSEUM

OF CALIFORNIA ART AT CHAPMAN UNIVERSITY

Geo-Detectives

Overview:

Students use California Scene Paintings to spot geographic clues – coastlines, farmland, deserts and cities – and mark those regions on individual California maps. They practice simple grid coordinates and explain how physical geography connects to where people live and what kinds of work grow there.



What Students Do:

- Analyze artworks for evidence of landforms, climate and resources
- Plot findings using a legend and a simple coordinate grid
- Explain how geography influences settlement patterns and economic activities

HILBERT MUSEUM

OF CALIFORNIA ART AT CHAPMAN UNIVERSITY

Arts Standards	Content Standards
3.VA:Re7.2 - Determine messages communicated by an image	HSS 3.1 - Students describe the physical and human geography and use maps, charts, and paintings to organize information about people, places, and environments in a spatial context.
3.VA:Re8 - Interpret art by analyzing use of media to create subject matter, characteristics of form, and mood.	HSS 3.1.1 - Identify geographical features in their local region (e.g., deserts, mountains, valleys, hills, coastal areas, oceans, lakes).
4.VA:Re7.2.4a - Analyze components in visual imagery that convey messages	HSS 4.1 - Students demonstrate an understanding of the physical and human geographic features that define places and regions in California.
4.VA:Re8 4a - Interpret art by referring to contextual information and analyzing relevant subject matter	HSS 4.1.3 - Identify the state capital and describe the various regions of California
5.VA:Re7.1 - Compare one's own interpretation of a work of art with the interpretation of others	HSS 4.1.5- . Use maps, charts, and pictures to describe how communities in California vary in land use, vegetation, climate, population density
5.VA:Re7.2 - Identify and analyze cultural associations suggested by visual imagery	